

CATALOGUE 2020



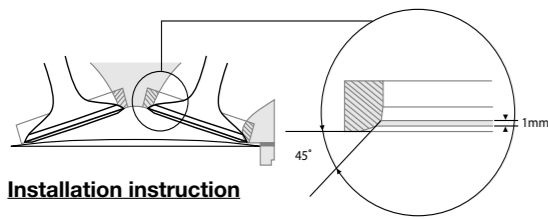
THE GENUINE DEFINITION OF WINNING!



PROIX
RACING PARTS

DIRTBIKE | STREETBIKE | ALLTERRAIN | WATERCRAFT | SNOWMOBILE | 50CC & MOPED

Valve Installation Instructions



ProX Titanium Engine Valves are manufactured to the highest quality standards and specifications. By using the latest state of the art Titanium material and coating, the valves have improved properties over the original item. We would like to support you to achieve maximum durability. Titanium is a very exotic material which requires you to work after following installation instructions.

- Do not touch the valve surface with your bare hands, use gloves or pre lube the valve with engine oil, these precautionary measures will reduce the risk of corroding the coating.
- Never** use a lapping compound on a new valve, take a dummy valve to do this grinding operation.
- Please take notice; during every rebuild the valve seats must be machined, this to assure a 100 % valve to seat contact and making the seat free from the hardened shell. The width of the contact zone on a valve seat with the valve face should be at least 1mm. In general the angle is 45°, however consult the O.E.M. specification first.
- New valve seats should be soft, material as Nodular Iron, Bronze, or Beryllium-Copper, all heat treated to Rockwell, RC32 or less. Most of the original valve seats used in combination with titanium valves are made of such an alloy.
Attention: After every rebuild the seat is getting thinner which makes the heat transfer worse, increasing the natural hardening process. The back set position of the valve (Recess) after every time one machines the valve seat, worsening the engine's breathing. Besides of reducing the engine's efficiency this also effects the cooling down effect negatively.
- Use only original valve springs or ones with forces not exceeding the originals.



CLUTCH BASKETS & CLUTCH DAMPENER SETS

(O.E.M. Replacemant Clutch Baskets)

ProX offers a complete line of clutch baskets kits for the Dirtbike and ATV segment. The **ProX** clutch baskets are manufactured from mainly forged 7075 alloy, like the material used in the aircraft and aerospace industry. The use of this material offers improved strength over the OEM die-cast alloy baskets. The **ProX** clutch baskets are machined to exact OEM specifications and tolerances for perfect fit. The complete surface of the baskets is hard anodised for higher mechanical properties and resistance for impact and fatigue. Most clutch baskets come complete with fasteners and damper rubbers for easy installation. The **ProX** baskets will work together with other **ProX** clutch components as well as OEM clutch components. A full line of **ProX** clutch baskets for Dirtbike and ATV models is available from stock.



Part No.	Notes	Rubbers	Qty.	Clutch Rubber Set	O.E.M. Reference
17.1186F	-	-	-	-	22100-GC4-600
17.1220F	Rubbers Included	17.9-1287	8x	17.CRS1287-8	22100-KZ4-A90 22100-KRN-670 22100-KSC-A10
17.1227F	-	-	-	-	22100-KSE-670
17.1287F	Rubbers Included	17.9-1287	8x	17.CRS1287-8	22100-KZ4-700
17.1340F	Rubbers Included	17.9-1287	8x	17.CRS1287-8	22100-KRN-A40
17.1386	Rubbers Included	17.9-1386	8x	17.CRS1386-8	22100-ML3-000
17.1387	-	17.9-1386	8x	17.CRS1386-8	22100-KZ3-000
17.1403F	Rubbers Included	17.9-1386	8x	17.CRS1386-8	22100-KZ3-860 22100-MEB-770 22100-MEY-670
17.1408F	Rubbers Included	17.9-1386	8x	17.CRS1386-8	22100-MEN-A10
17.1409F	Rubbers Included	17.9-1386	8x	17.CRS1386-8	22100-MEN-A30
17.1413F	Rubbers Included	17.9-1386	8x	17.CRS1386-8	22100-MEN-A70
17.1484	Rubbers Included	17.9-1386	8x	17.CRS1386-8	22100-KA5-700
17.1490	Rubbers Included	17.9-1386	8x	17.CRS1386-8	22100-ML3-910
17.1499F	-	-	-	-	22100-KCY-670
17.1505F	-	-	-	-	22100-HN1-A40
17.2020	-	-	-	-	31K-16150-01
17.2193F	-	-	-	-	4ES-16150-00
17.2196F	-	-	-	-	5PA-16150-10
17.2281F	-	-	-	-	3JM-16150-01
17.2293F	Rubbers Included	17.9-2288	6x	17.CRS2288-8	5NY-16150-00
17.2295	-	-	-	-	1C3-16150-00
17.2393	Rubbers Included	17.9-2288	8x	17.CRS2288-8	5DJ-16150-00
17.2401F	Rivets Included	-	-	-	5NL-16150-10
17.2404F	-	-	-	-	3AJ-16150-00 5BE-16150-00
17.2406	-	-	-	-	5JG-16150-00
17.2423	Rubbers Included	17.9-2424	8x	17.CRS2424-8	5TA-16150-10
17.2424F	Rubbers Included	17.9-2424	8x	17.CRS2424-8	5XD-16150-60 5XD-16150-10 B11-16150-00
17.2434F	-	-	-	-	5TG-16150-00
17.3187F	-	-	-	-	21200-02B41
17.3292F	Rubbers Included	17.9-3292	8x	17.CRS3292-8	21200-36F00
17.3338F	Rubbers Included	17.9-3386	8x	17.CRS3386-8	21200-49H00
17.3393	Rubbers Included	17.9-3386	8x	17.CRS3386-8	21200-28C41
17.3396F	Rubbers Included	17.9-3386	8x	17.CRS3386-8	21200-37E00
17.3400F	-	-	-	-	21200-29F10 21200-07G10
17.3403	Rubbers Included	17.9-3386	8x	17.CRS3386-8	21200-37F10
17.3405F	Rubbers Included	17.9-3405	8x	17.CRS3405-8	21200-35G00
17.3408F	Rubbers Included	17.9-3405	8x	17.CRS3405-8	21200-28H00
17.4085F	-	-	-	-	13095-1042 K13095-1042
17.4188	Rubbers Included	17.9-4198	6x	17.CRS4198-6	13095-1165
17.4198F	Rubbers Included	17.9-4198	6x	17.CRS4198-6	13095-1154 13095-1406
17.4286F	Rubbers Included	17.9-4389	6x	17.CRS4389-6	13095-1287
17.4285	Rubbers Included	17.9-4389	6x	17.CRS4389-6	13095-1189
17.4290	Rubbers Included	17.9-4389	7x	17.CRS4389-7	13095-1106



PISTON PARTS
 CRANKSHAFT PARTS
 VALVE TRAIN PARTS
 CLUTCH PARTS
 GASKETS
 DRIVE TRAIN PARTS
 BRAKE PARTS
 SUSPENSION PARTS
 WHEEL & STEERING PARTS
 DIMENSIONS
 FUEL & AIR PARTS

PISTON PARTS
 CRANKSHAFT PARTS
 VALVE TRAIN PARTS
 CLUTCH PARTS
 GASKETS
 DRIVE TRAIN PARTS
 BRAKE PARTS
 SUSPENSION PARTS
 WHEEL & STEERING PARTS
 DIMENSIONS
 FUEL & AIR PARTS

HEAD & BASE GASKET SETS continued..

OEM Reference

PART #	BASE GASKET	HEAD GASKET #1	HEAD GASKET #2
36.6308	548.30.030.002 / 004 / 005 / 075	077.00.78.020	077.01.05.020
36.6311	772.30.035.000	772.30.036.000	-
36.6313	772.30.035.000	777.30.036.085	-
36.6314	772.30.035.000	778.30.036.085	-
36.6316	792.30.035.000	790.30.036.086	-
36.6317	554.30.030.020 / 025 / 040 / 050 / 075	077.07.30.020	077.01.05.020
36.6319	792.30.035.000	793.30.036.086	-
36.6326	792.30.035.000	792.30.036.086	-
36.6327	554.30.030.020 / 025 / 040 / 050 / 075	077.00.78.020	077.01.05.020
36.6407	077.01.08.018 (2x) + 773.30.035.000	773.30.036.000	-
36.6412	594.30.035.000	595.30.036.000	-
36.6414	780.30.035.000	789.30.036.010	-
36.6416	794.30.035.000	794.30.036.010	-

DRIVE CHAINS

ProX has developed a premium line of Roller Chains to team up together with the ProX front and rear sprockets. The ProX Roller Chain is a top quality chain, exclusively manufactured for ProX by the reputable and leading OEM factory in Japan.

All ProX chains are made using highest grade Japanese steel. The MX chains are assembled out of various different component that all have their specific and crucial function to make the chain a high quality product.

Specifically for the Offroad, Enduro, ATV and big 4-Stroke Motocross bikes ProX also offers a lightweight, narrow type X-Ring chain using a QX-type seal offering 40% less friction and at least 150% increased durability over a standard MX Chain.

All ProX chains are pre-stressed and pre-stretched to reduce initial chain stretch and immediate performance and come with a clip type chain link as standard.

SPECIFICATIONS

Part No.	Chain		Roller		Pin Diameter (mm.)	Pin Length (mm.)	Plate Thickness		Weight Kg / 100 Links	Tensile Strength kN	Masterlink included	Remarks
	Type	Length	Width (mm.)	Diameter (mm.)			Inner (mm.)	Outer (mm.)				
07.RC420130C	420	130	6.35	7.75	3.95	17.30	2.00	2.00	1.01	23.1	Cliplink	MX Chain/Made in Japan
07.RC428130C	428	130	7.95	8.50	4.50	19.00	1.80	1.80	1.03	22.2	Cliplink	MX Chain/Made in Japan
07.RC520120C	520	120	6.35	10.15	5.25	17.50	2.00	2.00	1.52	39.7	Cliplink	MX Chain/Made in Japan
07.RC520120CG	520	120	6.35	10.15	5.25	17.50	2.00	2.00	1.52	39.7	Cliplink	MX Chain Gold/Made in Japan
07.RC520120XC	520	120	6.35	10.15	5.40	20.00	2.00	2.00	1.57	37.8	Cliplink	X-Ring Chain/Made in Japan
07.RC520120XCG	520	120	6.35	10.15	5.40	20.00	2.00	2.00	1.57	37.8	Cliplink	X-Ring Chain Gol /Made in Japan

SEPERATE MASTERLINKS

Part No.	Type		Remarks
	Rivetlink	Cliplink	
07.RC420CL	-	X	MX Chain
07.RC428CL	-	X	MX Chain
07.RC520CL	-	X	MX Chain
07.RC520CLG	-	X	MX Chain Gold
07.RC520XCL	-	X	X-Ring Chain
07.RC520XCLG	-	X	X-Ring Chain Gold
07.RC520XRL	X	-	X-Ring Chain
07.RC520XRL	X	-	X-Ring Chain



X-Ring type chain uses a special QX-type seal offering 40% less friction and at least 150% increased durability over a standard MX chain.

Bushes are solid type and heat treated for extra strength and reduced wear.

Solid type rollers are shot-peened and hardened for superior durability.

Inner plates are designed in a specific shape allowing less material to be used, which in combination with the unique lightning holes results in 3% lighter chain without compromising tensile strength.

Pins do feature an exclusive pin treatment providing an extremely hard Chromium Carbide surface coating on the outside, leaving a softer inside to increase strength while reducing overall chain wear. The coating offers superior protection against impact and reduces oxidation by natural elements to a minimum.

Outer plates are heat treated to offer incredible tensile strength and high wear resistance.

Chain links are heavy press fitted and do feature quad staked riveting for ultra strong connection.

BRAKE PAD SCHEMATICS

ProX offers a wide program of high quality dirt bike brake discs, manufactured from specially hardened premium quality Stainless Steel. The ProX brake disc line is the ideal budget OEM-replacement brake disc. The specific lightweight wave designed brake discs comes with integrated venting slots to offer optimal cooling and cleaning of the brake pad contact surface. These features result in high performance and linear braking with very low brake pad wear. For best performance we recommend using ProX brake pads with a matching pad compound. The ProX brake pad schematics do show DIMENSIONS and shape of each indivial brake pad set.

Part No.: 37.100202

Part No.: 37.102102

Part No.: 37.102202

Part No.: 37.103202

Part No.: 37.104102

Part No.: 37.105002

Part No.: 37.105202

Part No.: 37.105302

Part No.: 37.105802

Part No.: 37.106002

Part No.: 37.106202

Part No.: 37.106302

Part No.: 37.107202

Part No.: 37.109202

Part No.: 37.160202

Part No.: 37.167102

Part No.: 37.200802

Part No.: 37.201202

Part No.: 37.201302

Part No.: 37.202002

Part No.: 37.202302

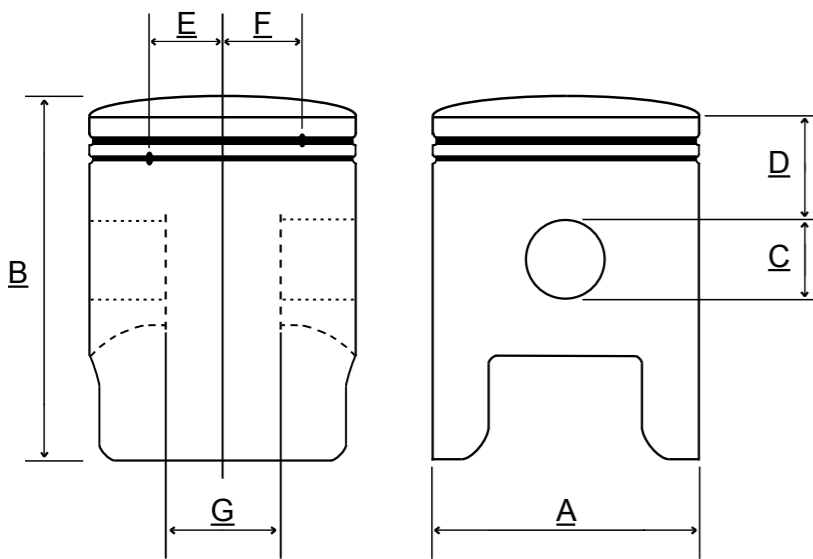
Part No.: 37.204202

Part No.: 37.204302

Part No.: 37.204402

PISTON DIMENSIONS

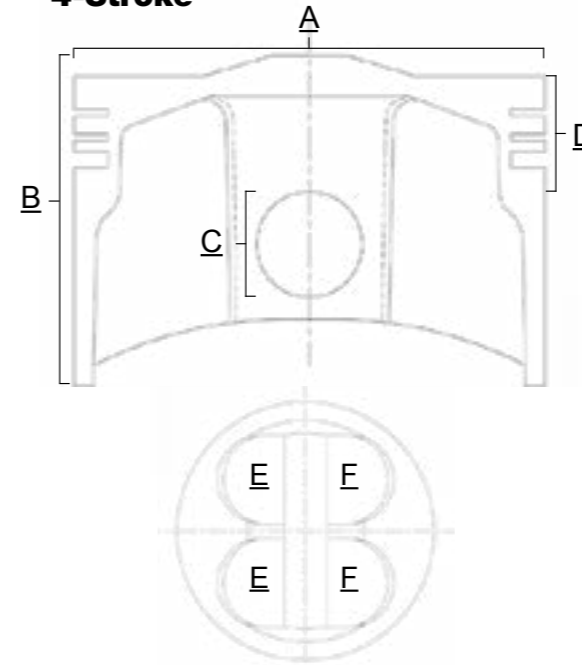
2-Stroke



- A = Diameter *
- B = Total height
- C = Pinhole diameter
- D = Compression height
- E = Ring location pin position from center
- F = Ring location pin position from center
- G = Pin boss spacing

All dimensions in mm.
 * In case of cast iron cylinder, piston bore diameter is mentioned
 * In case of nicasil cylinder, actual piston diameter is mentioned

4-Stroke



- A = Diameter *
- B = Total height
- C = Pinhole diameter
- D = Compression height
- E = Intake valve pocket diameter
- F = Exhaust valve pocket diameter

All dimensions in mm.
 * In case of cast iron cylinder, piston bore diameter is mentioned
 * In case of nicasil cylinder, actual piston diameter is mentioned

HONDA

Part No.	Engine	Std. Bore	A	B	C	D	E	F	G	Piston Head Shape	Remarks	Coating	Piston
01.1002.xxx	2-Stroke	40.00	-	51.00	10.00	20.50	10.75	10.75	13.50	Dome	-	-	Cast
01.1003.xxx	2-Stroke	39.00	-	50.50	12.00	17.50	12.00	12.00	15.00	Dome	-	-	Cast
01.1008.xxx	2-Stroke	41.00	-	48.00	10.00	15.00	12.00	12.00	13.00	Dome	-	-	Cast
01.1010.xxx	2-Stroke	39.00	-	53.50	12.00	21.70	8.75	8.75	15.00	Dome	-	-	Cast
01.1012.xxx	2-Stroke	40.00	-	51.00	12.00	19.25	11.00	11.00	15.00	Dome	-	-	Cast
01.1040.xxx	4-Stroke	39.00	-	36.30	13.00	10.50	-	-	15.40	Hollow	2 Valve Pockets	-	Cast
01.1050.xxx	4-Stroke	39.00	-	50.50	13.00	16.00	-	-	15.00	Dome	1 Valve Pocket	-	Cast
01.1052.xxx	4-Stroke	51.00	-	50.00	13.00	13.00	-	-	20.00	Dome	2 Valve Pockets	-	Cast
01.1070.xxx	4-Stroke	47.00	-	49.00	13.00	14.00	-	-	16.00	Dome	2 Valve Pockets	-	Cast
01.1075.xxx	4-Stroke	47.00	-	41.30	13.00	10.50	-	-	16.00	Dome	2 Valve Pockets	-	Cast
01.1090.xxx	4-Stroke	47.00	-	42.30	13.00	13.00	-	-	16.00	Hollow	2 Valve Pockets	-	Cast
01.1095.xxx	4-Stroke	50.00	-	44.20	13.00	12.75	-	-	16.00	Flat	-	-	Cast
01.1110.x	2-Stroke	46.00	45.95	53.00	14.00	17.00	-	11.50	16.50	Dome	Reed cut-out	-	Cast
01.1111.x	2-Stroke	47.00	46.95	53.00	14.00	17.00	-	12.00	16.00	Dome	Reed cut-out	-	Cast
01.1113.x	2-Stroke	47.50	47.45	53.00	14.00	17.00	-	12.00	16.00	Dome	Reed cut-out	Mos2 Skirt Coating	Cast
01.1160.xxx	2-Stroke	48.00	-	51.00	12.00	19.25	14.00	14.00	14.50	Dome	-	-	Cast
01.1163.xxx	2-Stroke	48.00	-	55.50	12.00	19.00	13.50	13.50	15.50	Dome	-	-	Cast
01.1175.xxx	4-Stroke	56.50	-	53.00	15.00	15.50	-	-	19.50	Flat	2 Valve Pockets	-	Cast
01.1176.xxx	4-Stroke	56.50	-	56.50	15.00	15.30	-	-	20.00	Dome	2 Valve Pockets	-	Cast
01.1200.x	2-Stroke	56.00	55.96	67.25	16.00	22.50	12.50	12.50	19.50	Dome	2 Intake Holes	-	Cast
01.1204.xxx	2-Stroke	54.00	-	60.50	14.00	21.00	12.50	-	19.50	Dome	Reed cut-out	-	Cast
01.1205.xxx	2-Stroke	54.00	-	60.50	14.00	21.00	13.00	-	19.00	Dome	-	-	Cast
01.1208.x	2-Stroke	54.00	53.93	60.50	15.00	20.50	11.50	-	17.50	Dome	-	-	Cast
01.1218.x	2-Stroke	54.00	53.94	58.00	15.00	20.50	11.50	-	17.50	Flat	Intake Hole	Mos2 Skirt Coating	Cast
01.1222.x	2-Stroke	54.00	53.94	60.50	15.00	20.50	11.00	-	18.00	Dome	Intake Hole	-	Forged
01.1225.x	2-Stroke	54.00	53.94	62.00	15.00	20.50	0.00	-	18.00	Dome	-	Mos2 Skirt Coating	Cast
01.1227.x	4-Stroke	66.00	65.97	32.40	14.00	13.50	-	-	15.50	Dome	4 Valve Pockets	-	Forged
01.1228.x	4-Stroke	66.00	65.97	33.20	14.00	13.50	-	-	15.50	Dome	4 Valve Pockets	-	Forged
01.1232.x	4-Stroke	66.00	65.97	27.60	14.00	13.50	-	-	15.50	Dome	4 Valve Pockets	-	Forged
01.1265.xxx	4-Stroke	63.00	-	50.75	15.00	17.20	-	-	22.50	Hollow	2 Valve Pockets	-	Cast
01.1272.xxx	4-Stroke	65.00	-	51.60	15.00	17.00	-	-	21.00	Flat	2 Valve Pockets	-	Cast
01.1280.xxx	4-Stroke	53.00	-	43.50	14.00	12.70	-	-	17.50	Flat	1 Valve Pocket	-	Cast
01.1281.xxx	4-Stroke	65.50	-	50.60	15.00	17.50	-	-	22.00	Flat with raised top	2 Valve Pockets	-	Forged
01.1300.xxx	2-Stroke	66.00	-	78.50	18.00	24.00	14.00	14.00	23.50	Dome	Intake Hole	-	Cast
01.1309.xxx	2-Stroke	66.00	-	78.50	18.00	29.00	13.75	13.75	24.00	Dome	Reed cut-out	-	Cast
01.1315.x	2-Stroke	66.40	66.34	79.00	18.00	29.00	14.00	14.00	23.50	Dome	Reed cut-out	Mos2 Skirt Coating	Cast
01.1320.x	2-Stroke	66.40	66.34	75.50	18.00	29.00	14.00	14.00	23.00	Flat	Reed cut-out	Mos2 Skirt Coating	Cast
01.1323.x	2-Stroke	66.40	66.34	75.00	18.00	29.00	13.00	13.00	23.50	Flat	-	Mos2 Skirt Coating	Cast
01.1325.x	2-Stroke	66.40	66.34	79.00	18.00	29.00	13.00	-	23.00	Dome	-	Mos2 Skirt Coating	Cast
01.1338.x	4-Stroke	78.00	77.97	30.00	16.00	11.00	-	-	16.80	Dome	4 Valve Pockets	Mos2 Skirt Coating	Forged
01.1339.x	4-Stroke	78.00	77.97	32.50	16.00	11.00	-	-	16.80	Dome	4 Valve Pockets	Mos2 Skirt Coating	Forged
01.1341.x	4-Stroke	76.80	76.77	33.20	16.00	11.00	-	-	20.00	Dome	4 Valve Pockets	-	Forged
01.1342.x	4-Stroke	76.80	76.77	33.40	16.00	11.00	-	-	16.80	Flat with raised top	4 Valve Pockets	-	Forged
01.1343.x	4-Stroke	76.80	76.77	34.60	16.00	11.00	-	-	16.80	Flat with raised top	4 Valve Pockets	-	Forged
01.1346.x	4-Stroke	76.80	76.77	34.50	16.00	11.00	-	-	16.80	Flat with raised top	4 Valve Pockets	-	Forged
01.1348.x	4-Stroke	79.00	78.97	-	-	-	-	-	-	Flat with raised top	4 Valve Pockets	-	Forged



4-Stroke Piston Drawing Sheet

Return to: Race Winning Brands Europe B.V. • Fax: (+31) (0)252 689 252 • info@rwteam.eu

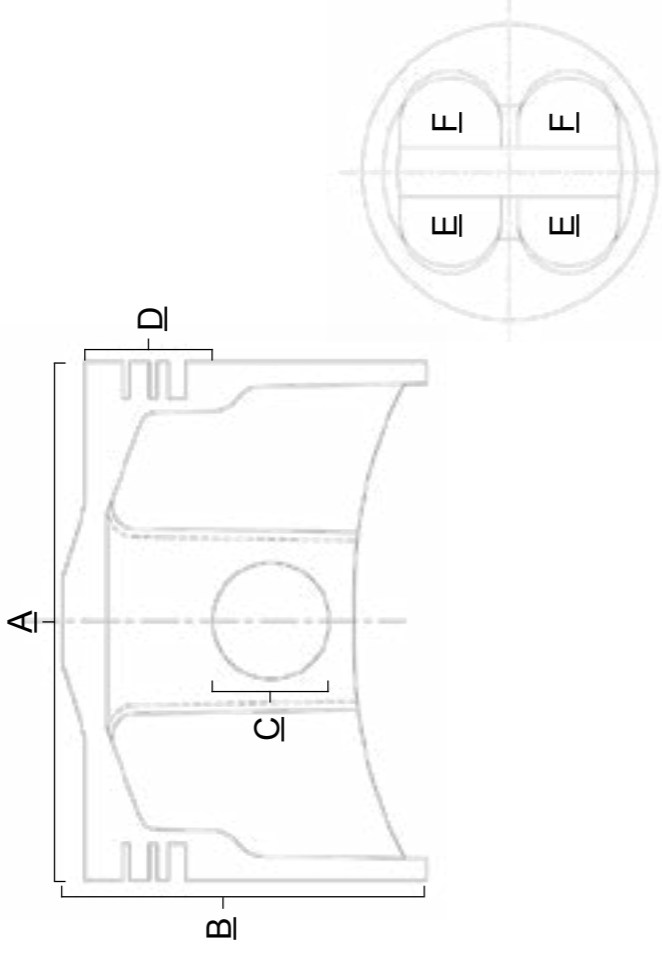
Brand: Model: Year:
Measured dimensions: A: B: C: D: E: F:
Remarks:

Optional additional information

Piston head details : (i.e. flat, dome, inverted dome, etc.)
Piston ring details : (i.e. thickness, shape, etc.)
Lubrication holes :
Other :

Sender Information

Company Name:
Requested action:
 Return by fax:
 Return by e-mail:
Suggest alternative if preferred item is not available: Yes No



To be completed by ProX representative:

Suggested Piston Part No.: Description:
Dimensions: A: B: C: D: E: F: G:
Remarks:



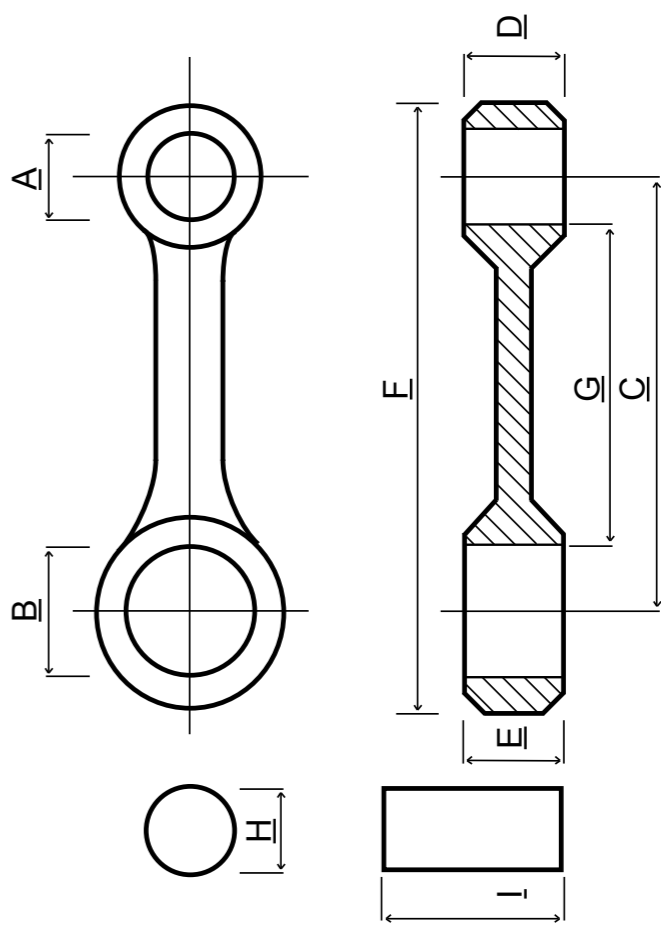
Connecting Rod Drawing Sheet

Return to: Race Winning Brands Europe B.V. • Fax: (+31) (0)252 689 252 • info@rwteam.eu

Brand: Model: Year: 2-Stroke 4-Stroke
Measured dimensions: A: B: C: D: E: F: G: H: I:
Remarks:

Optional additional information

Washer size details : X X thickness
inner outer
Bearing Details : (i.e. 'M' or 'F' Cage, number of needles, etc.)
Other :



Sender Information

Company Name:
Requested action:
 Return by fax:
 Return by e-mail:
Suggest alternative if preferred item is not available: Yes No

To be completed by ProX representative:

Suggested Connecting Rod Part No.: Description:
Dimensions: A: B: C: D: E: F: G: H: I:
Remarks: